



## TiGiJet™ Data-throughput Accelerator

TiGiJet™ is a data-throughput accelerator for application server and networked storage environments. TiGiJet enables you to deliver a substantially better computing experience to users while adding years to the life of your current technology investments.

### Speed-up Applications and Databases by 800% or More

TiGiJet accelerates data response time by placing your most I/O intensive application, operating system and database components into high-performance solid-state memory, enabling read/write processing to execute dramatically faster. Using standard SCSI or Fibre channel interfaces for easy installation, TiGiJet makes your information systems dramatically faster and more scalable, while delivering powerful business benefits:

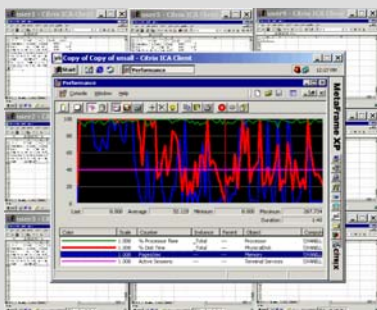


- Speeds up data response time by 800% or more, resulting in increased service levels and worker productivity.
- Maximizes ROI by extending the life of existing systems.
- Non-volatile design ensures maximum data reliability in high availability, mission critical environments.

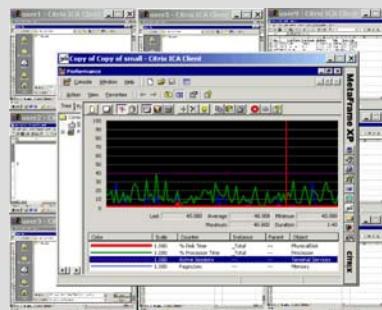
## Experience the TiGiJet Effect

*The "TiGiJet Effect" makes your entire server or storage system more efficient by eliminating data latency issues and reducing processor utilization, resulting in dramatically improved application performance and scalability.*

Without TiGiJet



With TiGiJet



Citrix MetaFrame environment with 40 power users.

Green = Processor Utilization  
Red = Disk Queuing  
Blue = Swap File Utilization



### **TiGiJet Product Family**

TiGi has a variety of data-throughput acceleration products designed to meet the needs of enterprise computing and networked storage environments.

Product	Target Application	Form Factor	Solid State Capacity
TiGiJet	Application servers	Low Profile	2GB
TiGiJet Exp	Database servers	Half Height	4GB – 6GB

### **TiGiJet Technical Features**

- Utilizes high performance solid-state memory – enables read/write operations to execute at the speed of RAM.
- Easily configures to almost any existing server without disruption.
  - Available with SCSI or Fibre Channel interfaces
  - Half-height or low-profile form factors
  - OS and application independent
- Extremely reliable with a MTBF of 2,000,000 hrs.
- Hot pluggable design for RAID and JBOD enclosures, general and high availability servers, and other storage systems.
- Non-volatile device with built-in power and data backup systems.
- On-the-fly error detection and correction.
- Access Time 60 microseconds (mS).
- Sustained Data Transfer Rate > 72MB/sec.
- Operating Temperature 0 to 50° C.

### **About TiGi Corporation**

TiGi develops products and solutions that dramatically increase scalability and performance of server-based computing and networked storage environments. Our TiGiJet product family dramatically accelerates data-throughput and removes I/O bottlenecks, increasing data response performance by as much as 800%.

Featuring a unique open architecture design, TiGi products can be quickly configured for most any server or storage system; enabling you to deliver a substantially better computing experience to users while maximizing the ROI of your existing technology.

For more information please visit TiGi online at [www.tigicorp.com](http://www.tigicorp.com) or call (800) 515-1581.